

Product Information

FIMUSPMACIN - Spin Maracas Circular Musical Insert

BS EN 1176 - Designed to British & European Standards


MATERIALS

Panel - Two Colour **XDeco** High Density Polyethylene (HDPE)

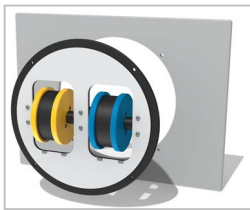
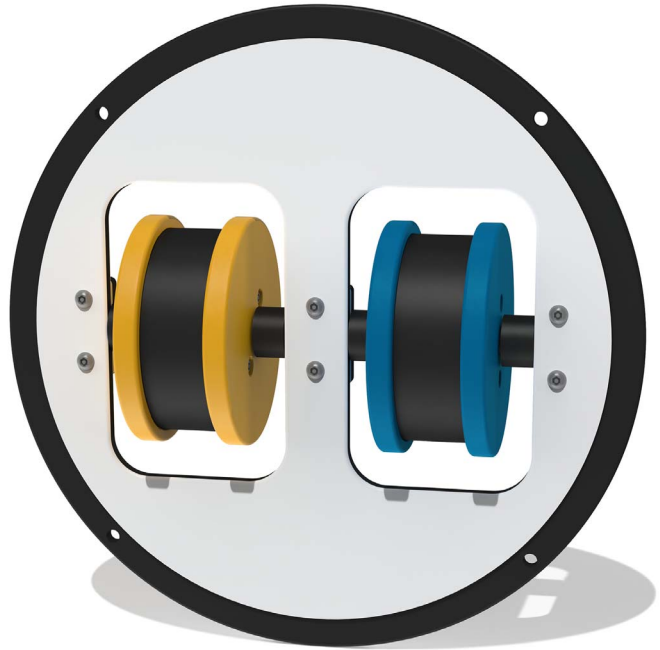
Tongue Drum - Stainless steel with brushed finish

SUPPLY METHOD

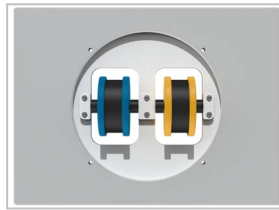
Insert - Fully assembled

 **MUSICAL** - 2 different textured sounds

 **CO-ORDINATION** - Develops hand eye co-ordination

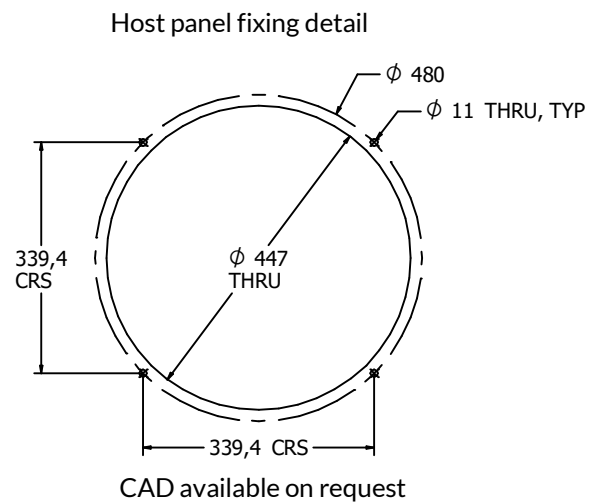
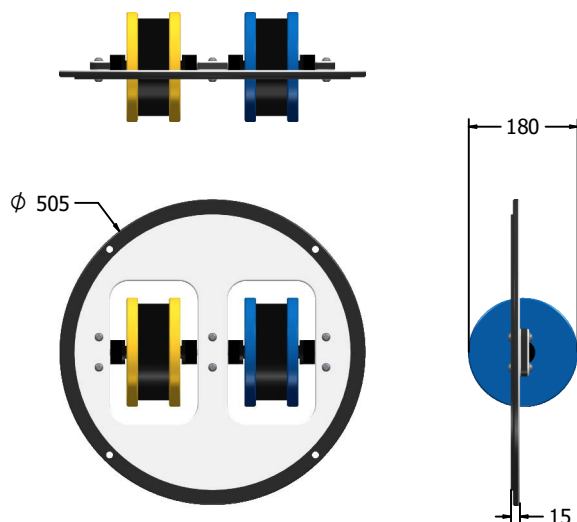


Insert can easily attach to your own panel



Rear view of insert attached to host panel

DIMENSIONS



TECHNICAL

Age Range: 2+ Years
 Largest Part: ϕ 505 x 180mm
 Total Weight: 4.8Kg
 Surfacing: N/A

IMPORTANT: you must specify the colour option you require at the time of order if it is different from the colour listed/shown above, requirements are subject to availability at the time of order