

# Product Information

## FIMUSHAKCIN - Shaker Circular Musical Insert

BS EN 1176 - Designed to British & European Standards

### MATERIALS

**Panel** - Two Colour  High Density Polyethylene (HDPE)

**Windows** - Clear Polycarbonate

**Balls** - Stainless steel with polish finish

### SUPPLY METHOD

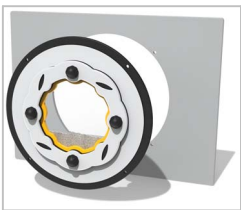
**Panel** - Fully assembled



**ROTATE** - 360 degree revolving drum



**SOUND** - Jingling sound from tumbling balls

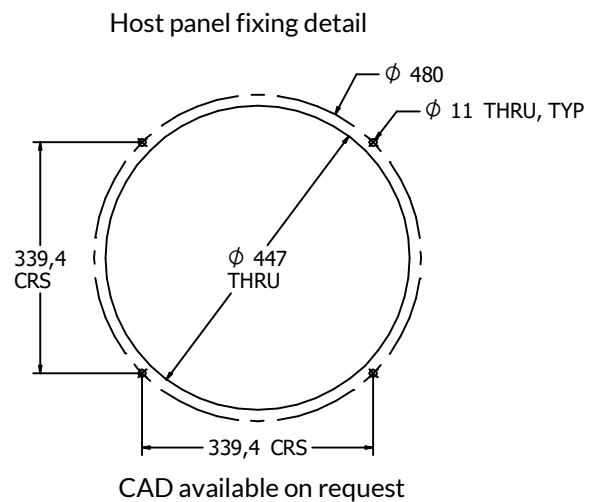
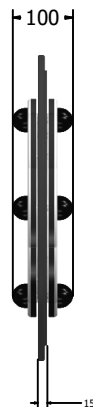
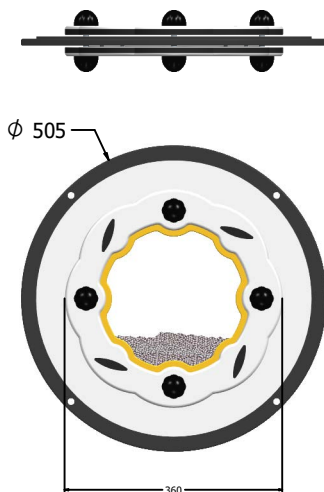


Insert can easily attach to your own panel



Rear view of insert attached to host panel

### DIMENSIONS



### TECHNICAL

**Age Range:** 2+ Years  
**Largest Part:** Ø505 x 100mm  
**Total Weight:** 4.5kg Approx.  
**Surfacing:** N/A

IMPORTANT: you must specify the colour option you require at the time of order if it is different from the colour listed/shown above, requirements are subject to availability at the time of order