

# Product Information

## FIMUTONGIN - Tongue Drum Musical Panel Insert

BS EN 1176 - Designed to British & European Standards

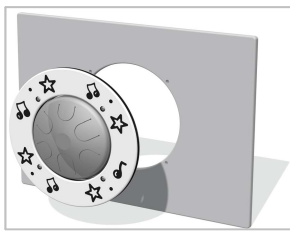
### MATERIALS

**Panel** - Two Colour High Density Polyethylene (HDPE)

**Tongue Drum** - Stainless steel with brushed finish

### SUPPLY METHOD

**Insert** - Fully assembled

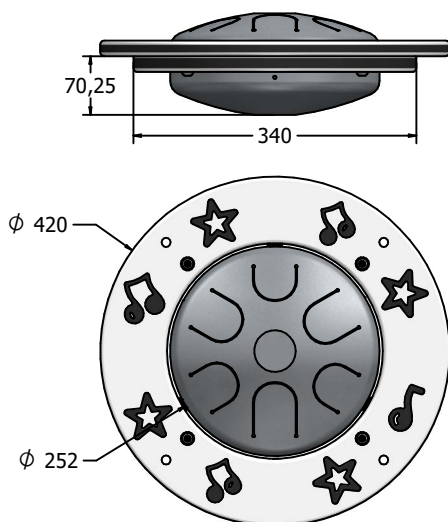


Insert can easily attach to your own panel

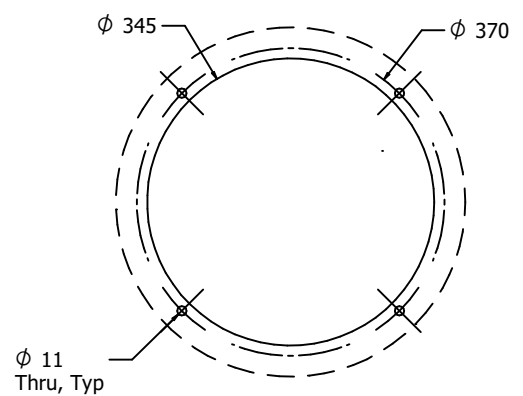


Rear view of insert attached to host panel

### DIMENSIONS



### Host panel fixing detail



CAD available on request

### TECHNICAL

**Age Range:** 2+ Years  
**Largest Part:** Ø420 x 122mm  
**Total Weight:** 5.5Kg  
**Surfacing:** N/A

IMPORTANT: you must specify the colour option you require at the time of order if it is different from the colour listed/shown above, requirements are subject to availability at the time of order