

Product Information

FIMUTONGIN - Tongue Drum Musical Insert

BS EN 1176 - Designed to British & European Standards

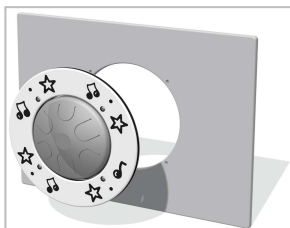
MATERIALS

Panel - Two Colour High Density Polyethylene (HDPE)

Tongue Drum - Stainless steel with brushed finish

SUPPLY METHOD

Insert - Fully assembled

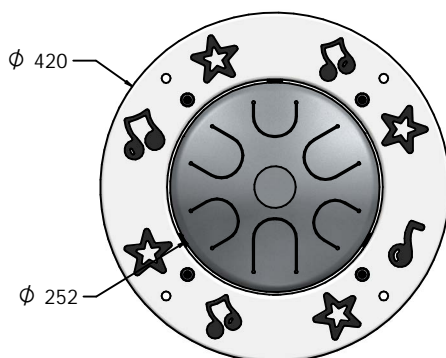
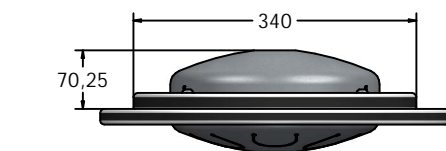


Insert can easily attach to your own panel

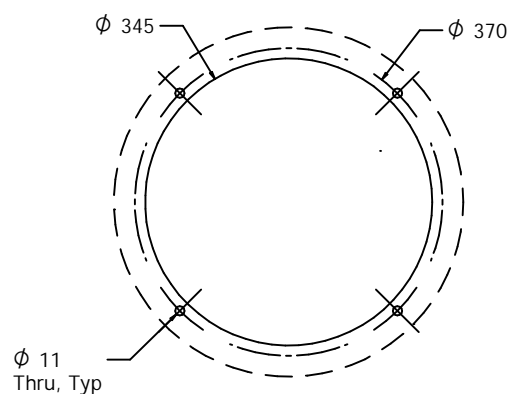


Rear view of insert attached to host panel

DIMENSIONS



Host panel fixing detail



CAD available on request

TECHNICAL

Age Range: 2+ Years
Largest Part: Ø420 x 122mm
Total Weight: 5.5Kg
Surfacing: N/A

IMPORTANT: you must specify the colour option you require at the time of order if it is different from the colour listed/shown above, requirements are subject to availability at the time of order