

Product Information

FIFTWRAMP - Wave Ramp

BS EN 1176 - Designed to British & European Standards

MATERIALS

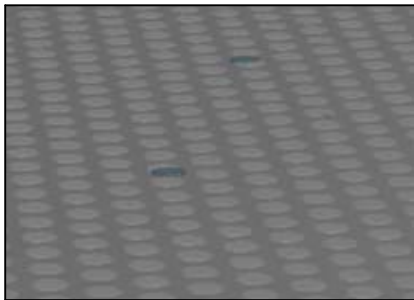
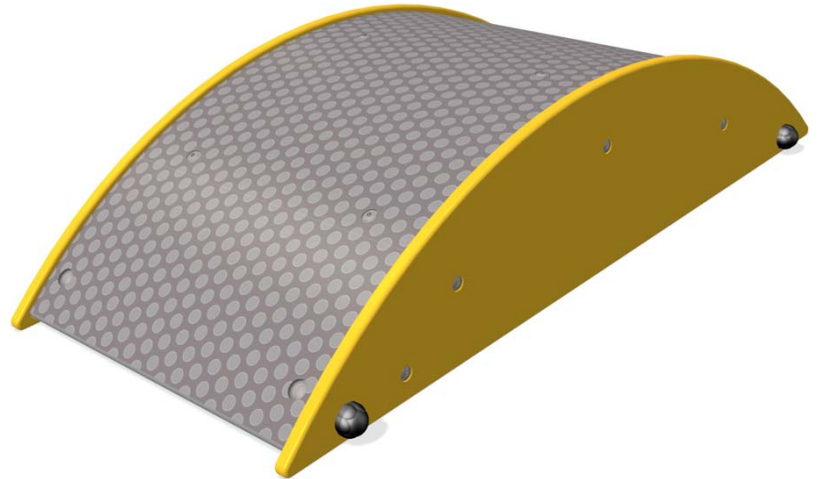
Panel - Single Colour High Density Polyethylene (HDPE)

Polydek - HDPE with a rubber button grip top surface

Recycled Posts - Recycled plastic with a texture finish

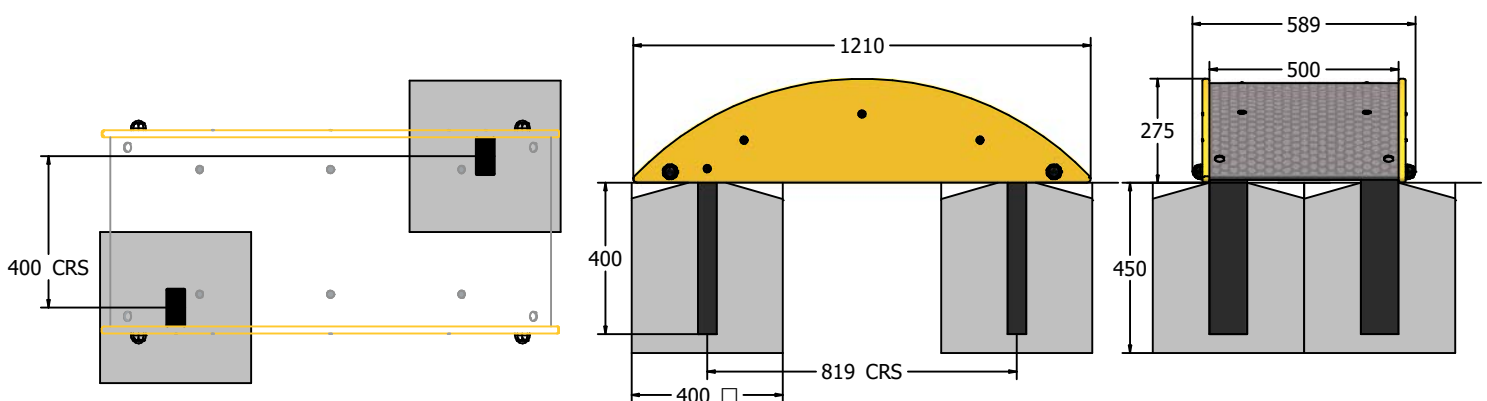
SUPPLY METHOD

Wave Ramp - Pre-assembled for easy installation



Anti-Slip Polydek Tread

DIMENSIONS



TECHNICAL

Age Range: 4+ Years
Largest Part: Ramp Assembly - 1210 x 725 x 589mm
Total Weight: 32kg Approx.
Surfacing: N/A

IMPORTANT: you must specify the colour option you require at the time of order if it is different from the colour listed/shown above, requirements are subject to availability at the time of order