

Product Information

FIFBOAT - Fishing Boat

BS EN 1176 - Designed to British & European Standards

MATERIALS

Panels - Two Colour High Density Polyethylene (HDPE)

PolyDek - HDPE with a rubber button grip top surface

Recycled Posts - Recycled plastic with textured finish

LumbeRock Benches - Recycled HDPE milk bottles with a wood grain finish

SUPPLY METHOD

Fishing Boat - 3 Sections with joining plates and fixings

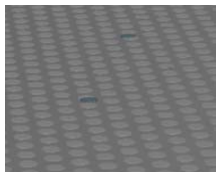
FEATURES



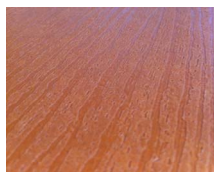
SOCIAL - Fishing Boat Role - Play and Seating



ROTATE - Rotating Boat Wheel

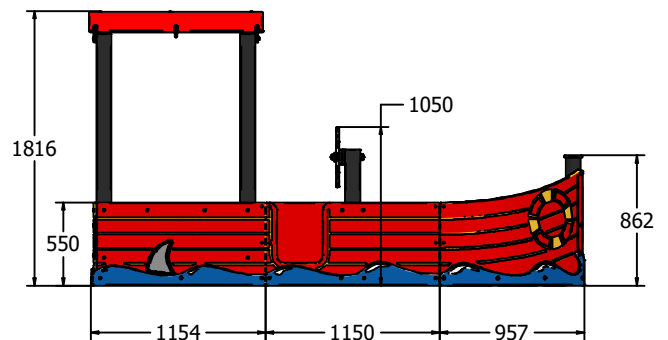
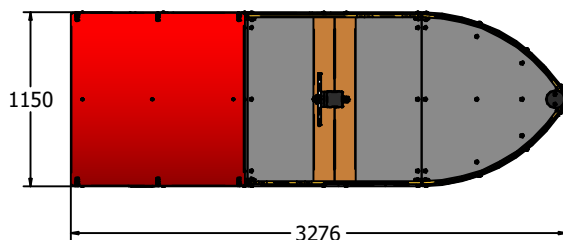


Slip Resistant Polydek



LumbeRock Benches

DIMENSIONS



TECHNICAL

Age Range: 2+ Years
Largest Part: Stern Section Assembly - 1816 x 1150 x 1154mm
Heaviest Part: Stern Section Assembly - 178kg Approx.
Total Weight: 303kg Approx.
Surfacing: N/A

IMPORTANT: you must specify the colour option you require at the time of order if it is different from the colour listed/shown above, requirements are subject to availability at the time of order